

Test Method of iPaint

PART 1 戶外表面溫度測試

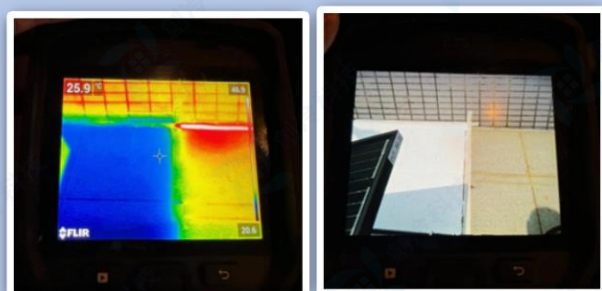
Outdoor Surface Temperature Test

使用工具 Tool



IR Camera

示意圖 Schematic diagram



Method 1 前後對比 Comparison of Before and After Painting



1. 應用iPaint之前使用IR Camera對場地進行拍攝。
Using the IR Camera to take pictures before painting iPaint.



2. 應用iPaint之後使用IR Camera對場地進行拍攝。
Using the IR Camera to take pictures after painting iPaint.



3. 對比應用前後效果。
Compare the temperature of the site before and after painting.

Method 2 參照對比 Reference Comparison of 2 Rooms



1. 場地應用iPaint后，尋找附近未油漆的參照物 (如屋頂邊緣無油漆處) 使用IR Camera對場地進行拍攝。
After painting iPaint, find the nearby unpainted references (e.g. unpainted rooftop edges) and then use the IR Camera to take pictures.



2. 對比實驗組和參照組效果。(如示意圖)
Compare the temperature of the test site (with iPaint) with the control site (without iPaint).

PART 2 室內溫度測試

Outdoor Surface Temperature Test

使用工具 Tool



Temperature measurement sensor

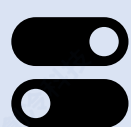
電池款
Type 1 of Battery
需要5日更換1次電池

無線款
Type 2 of Wi-Fi
無需更換電池

機器安裝方法 Method of Sensor Installation



1. 安裝測溫儀，插入2條導線，使用絕緣膠紙將1條導線貼在天花板處，另1條導線懸空與空氣中。
Install the sensor, insert two wires, stick one wire to the ceiling with insulating tape, and hang the other in the air.



2. 啓動開關，建議設置為3分鐘-5分鐘讀取一次數據。
Start the switch of the sensor, it is recommended to set it to read data once every 3-5 mins.(The collection period according to the requires.)

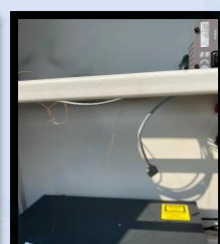
示意圖 Schematic diagram



Insert 2 wires



Stick one wire to the ceiling



Hang the other wire in the air

Method 1參照對比 Reference Comparison of 2 Rooms



1. 在2個條件相似的房間，同時安裝測溫儀。
Install a sensor in 2 Rooms in similar situations.

2. 一間進行油漆工程，另一間保持不變。
The test room will be painted, and the control room will remain unchanged.

3. 待油漆工程結束一段時間后，將2部機器收集的數據用USB導入excel生成溫度對比圖。
After the painting project is finished, import the data collected by 2 sensors into Excel by USB to generate a temperature comparison. (The collection period according to the requires.)

Method 2 前後對比 Comparison of Before and After Painting

1. 油漆前安裝溫度sensor

Install the temperature sensor before painting.

2. 進行油漆工程，記錄前後時間

Painting and record the time of before and after painting.

3. 待油漆工程結束一段時間后，將1部機器收集的數據用USB導入excel生成溫度變化圖

After the painting project is finished for a period of time, import the data collected by 1 sensor into excel with USB to generate a temperature change chart. (The collection period according to the requires.)

NOTE:*這個方法受天氣影響，前後時間的氣溫會有浮動。盡量選擇較為穩定的一段時間進行測試

This method is affected by the weather, and the temperature will fluctuate before and after. Please choose a relatively stable period of time for testing.

Test Method of iFilm

PART 1 操作方法

Method of Operation

使用工具 Tool



Bottle



Squeegee



1. 清洗幹淨玻璃表面。
Clean the glass surface.



2. 準備小瓶洗潔精水噴霧，往玻璃表面上噴水，盡量覆蓋整塊玻璃。
Prepare a small bottle of detergent water spray & Spray water onto the surface of the glass, covering as much of the glass as possible with spray.



3. 薄膜平整鋪開，用膠紙粘著薄膜邊，撕出保護紙，邊撕邊向薄膜內部噴水。
Lay the iFilm out flat, tape the edges of the film, tear out the protective paper, and spray water on the inside of the film.



4. 均勻貼上薄膜於玻璃表面上，使用刮板勻速擠出裏面全部水及氣泡。
Apply the film evenly to the glass surface and use a squeegee to squeeze out all the water and air bubbles inside.

**注意：邊緣不要碰到邊框或者玻璃膠，避免時間長翹邊。
Do not touch the edges of the frame or glass glue to avoid warping over time.**

PART 2 測試方法

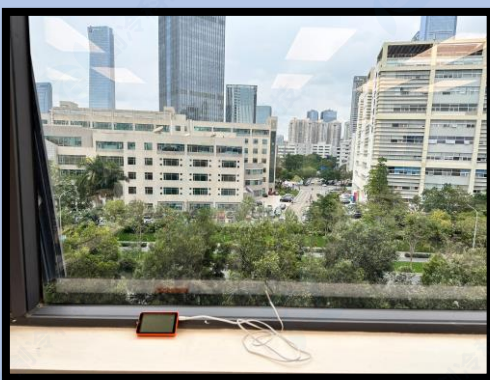
Indoor Temperature Test

使用工具 Tool



Thermometer

示意圖 Schematic diagram



關閉空調系統1-2小時，關閉房間門。將氣溫測量器放在貼上薄膜的玻璃約5-10cm處進行測量氣溫。
Turn off the air conditioning system for 1-2 hours and close the door.
Take a thermometer and place it about 5-10cm from the glass with iFilm to measure the temperature.

Method 1 參照對比 Reference Comparison of 2 Rooms



- 在2個條件相似的房間，一間的玻璃進行貼膜工程，另一間保持不變。
Choosing 2 Rooms in similar situations. The test room applies the iFilm, and the control room remains unchanged.
- 關閉空調系統1-2小時，關閉房間門。將氣溫測量器放在貼上薄膜的玻璃和未貼薄膜的玻璃約5-10cm處進行測量氣溫。
Turn off the air conditioning system for 1-2 hours and close the door.
Take a thermometer and place it about 5-10cm from the glass with iFilm and without iFilm to measure the temperature.
- 分不同時間段進行測試，對比兩個房間的溫度。
Conduct the test at different times and compare the temperatures of these 2 rooms.

Method 2 前後對比 Comparison of Before and After Painting

- 貼膜前用測溫儀測試房間內溫度。
Test the room temperature with the thermometer before apply the iFilm.
- 進行貼膜工程，記錄前後時間。
Applying and record the time before and after.
- 待工程結束一段時間后，關閉空調系統1-2小時，關閉房間門。將氣溫測量器放在貼上薄膜的玻璃約5-10cm處進行測量氣溫。
After the painting project is finished for a period of time, turn off the air conditioning system for 1-2 hours and close the room door.
Take a thermometer and place it about 5-10cm from glass with iFilm to measure the temperature.
- 對比前後數據。
Compare the result of before apply and after.

NOTE: *這個方法受天氣影響，前後時間的氣溫會有浮動。盡量選擇較為穩定的一段時間進行測試。

This method is affected by the weather, and the temperature will fluctuate before and after. Try to choose a relatively stable period of time for testing.